

SOCIOLOGY CAREERS IN AI POLICY

Addressing ethical use and inequality



Example job titles

- Graduate Development Program
- Data Scientist
- Research Fellow
- Public Policy Specialist
- Manager Artificial Intelligence Advisory
- Academic Coordinator
- Head of Data and AI Governance



Building work experience

Students search for:

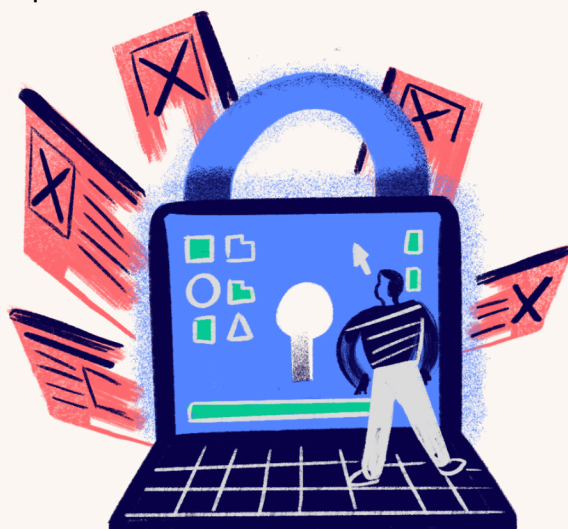
- Research assistant or PhD opportunities
- Volunteer with not-for-profits
- Apply for paid graduate programs in government



Roles for sociologists

Ethics and policy: Provide guidance to ensure technology is built, used, and managed responsibly

Behavioural research: Study how people use AI, its social impact, and how to mitigate potential harm



Sociological skills

- Policy development
- Analysis
- Compliance
- Risk management
- Digital research
- Data management
- Strategic planning
- Quantitative methods



Job hunting keywords

- Artificial intelligence ethics
- AI behavioural researcher
- AI behaviour



SOCIOLOGY
AT WORK